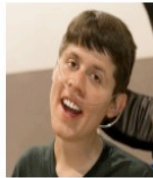


# The Arc Southeast Mississippi Endowment Fund

On behalf of...



## About The Greater PineBelt Community Foundation

The Greater PineBelt Community Foundation (PineBelt Foundation), a 501(c)(3) non-profit organization, was formed as a charitable organization to receive gifts to support non-profit organizations or charitable causes in the Pine Belt. The organization was formed in 1997 by local civic leaders, and is governed by a strong Board of Directors. It is one of 750 community foundations in the United States today.

The PineBelt Foundation accepts a wide variety of gifts, including: cash, stocks, life insurance, property, and bequests – all providing donors' great flexibility and maximum tax benefits.

If you would like to donate to this fund, please detach the section below and mail it to The Greater PineBelt Community Foundation, or donate on-line at [www.PineBeltFoundation.org](http://www.PineBeltFoundation.org) and click on the "DONATE TODAY" button.

**Questions? Call 601.583.6180.**

### About The Arc

The Arc Southeast Mississippi is a United Way non-profit agency devoted to providing community-based services to individuals with mental challenges and their families. In addition, through our programs, The Arc promotes and encourages the acceptance of those with mental disabilities by exposure to, and interaction with, people in our community. The services we provide and the population that we reach makes us a unique agency.

No other organization serves **solely** individuals with developmental disabilities. In the last several years we have seen a dramatic increase in the number of referrals to our agency from medical, educational, social and individual sources.

### The Arc Programs

Our agency is committed to providing a network of support for families as they face the challenges of caring for a child or adult with physical and/or mental disabilities. We attempt to achieve this goal through our various programs, including After School Care, Seasonal Social Activities, Mother's Day Out, Adventures Summer Program, Day at The Arc/Weekend Respite, Sunday Church Service Participation, Adult Male Respite / Adult Female Respite, Parent Support Groups, Rise and Shine, and Sunsetters not Sunsitters.

### Who The Arc Serves

The Arc serves clients from Lamar, Perry, Marion, Green, Jones, Wayne, and Stone counties. Clients range in age from birth until the individual's death. The scope of disabilities includes: hearing impaired, visually impaired, physically impaired, multi-disabled, mentally disabled, medically fragile, and autism. In a fiscal year, approximately 500 individuals with some form of disability or members of the community at large are served.

## Give to The Arc Southeast Mississippi Endowment Fund

*(Please detach this portion and return with your donation. Thank you!)*

Donation amount: \$ \_\_\_\_\_

Name: \_\_\_\_\_

Address: \_\_\_\_\_

Email: \_\_\_\_\_ Phone: \_\_\_\_\_

Organization (if applicable): \_\_\_\_\_

Organization Address: \_\_\_\_\_

Please make check payable to: The Greater PineBelt Community Foundation with The Arc Southeast MS Fund in the memo line.

Mail to: 1507 Hardy Street, Suite 208, Hattiesburg, MS 39401